

Custom Transfer Prices Utility (CustXFERPrices)

User Guide (version 1)

Prepared by Jamie Stewart on Sunday, March 06, 2005

The Custom Transfer Prices Utility was designed to allow an AMSWin user to do two things:

1. Export their price information to a file
2. Import a price file into their database

Some common reasons why one might need this utility:

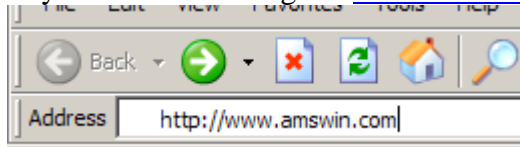
1. A direct jobber uses a formula to derive a normal customer price that she and all her down-line use. Instead of all down-line users manually changing their price list themselves, it is possible for the direct jobber to change her prices, export them to a file, and distribute the file to all AMSWin users in her down-line.
2. A dealer needs to use the normal customer prices from a file provided by his direct jobber.
3. A dealer has updated all of his product descriptions, and wants to import the latest price list from the AMSWin website, but does not want to overwrite his descriptions.

Prerequisites:

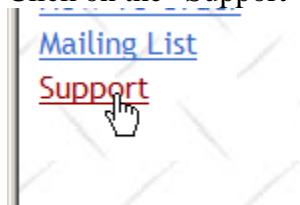
Because this is written in Microsoft's most up-to-date development environment, this program requires a recent copy of the .NET framework be installed on your computer. If you need to install it, please go to <http://go.microsoft.com/fwlink/?LinkId=9832>.

Installation Instructions:

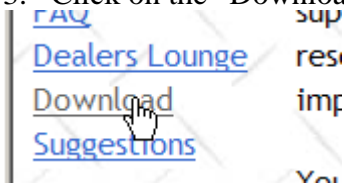
1. In your web browser go to www.amswin.com



2. Click on the "Support" link to display the support page



3. Click on the “Download” link to display the download page



4. The download page will display:



5. Scroll down the page...



until you see the “Download the Custom Transfer Prices Utility” link

- [Windows Installer 2.0](#)
- [Fix the "Error 3633 Can't load DLL: MSJTER35.DLL" error](#)
- [Erase Your AMSWin Security Information](#)
- [Download the Custom Transfer Prices Utility](#)

and then click the link.

6. Click the "Custom Transfer Prices Utility" link

Custom Transfer Prices Utility

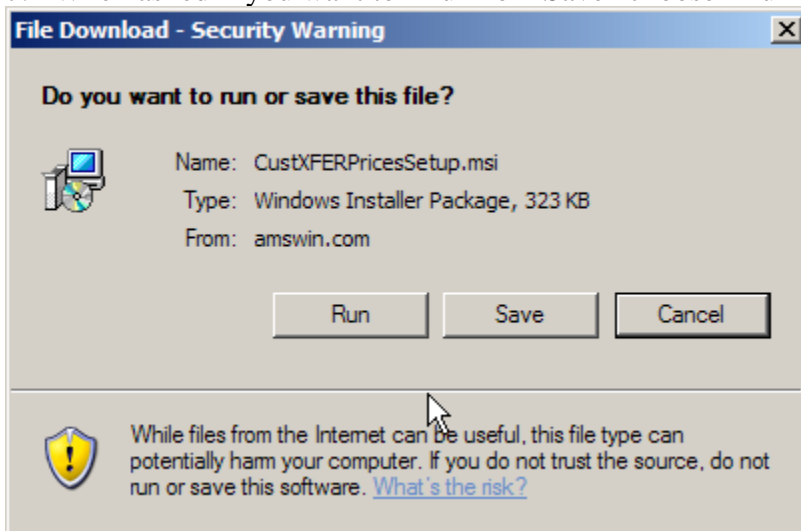
This utility will allow you to export your prices to a file so others can import them. If you plan to exchange prices with someone, both of you need this utility. The person with the master list will export prices to a file, and the person who wants to use the list will import the prices from the file into their AMSWin database. This utility also will allow you to import the standard price list while excluding one or more fields (such as the description field).

Formats: [Click Here to Install the Custom Transfer Prices Utility](#) (323 Kb) .

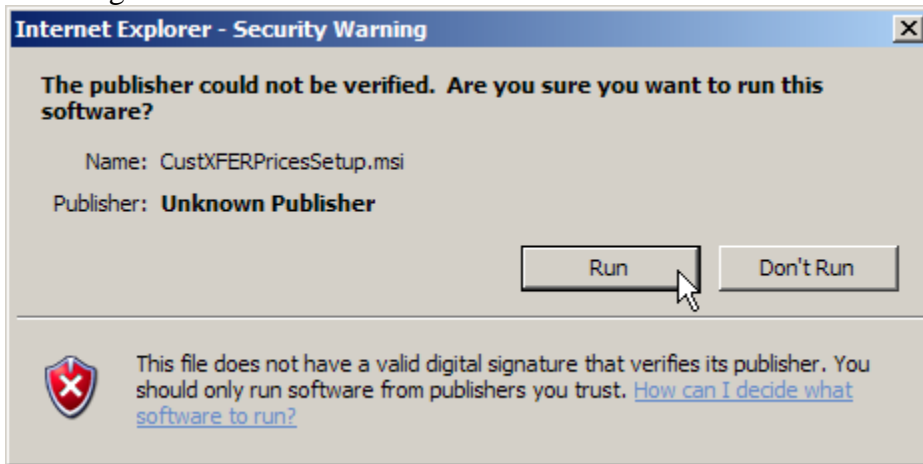
Last updated: Sunday, March 6, 2005

[Download instructions](#)

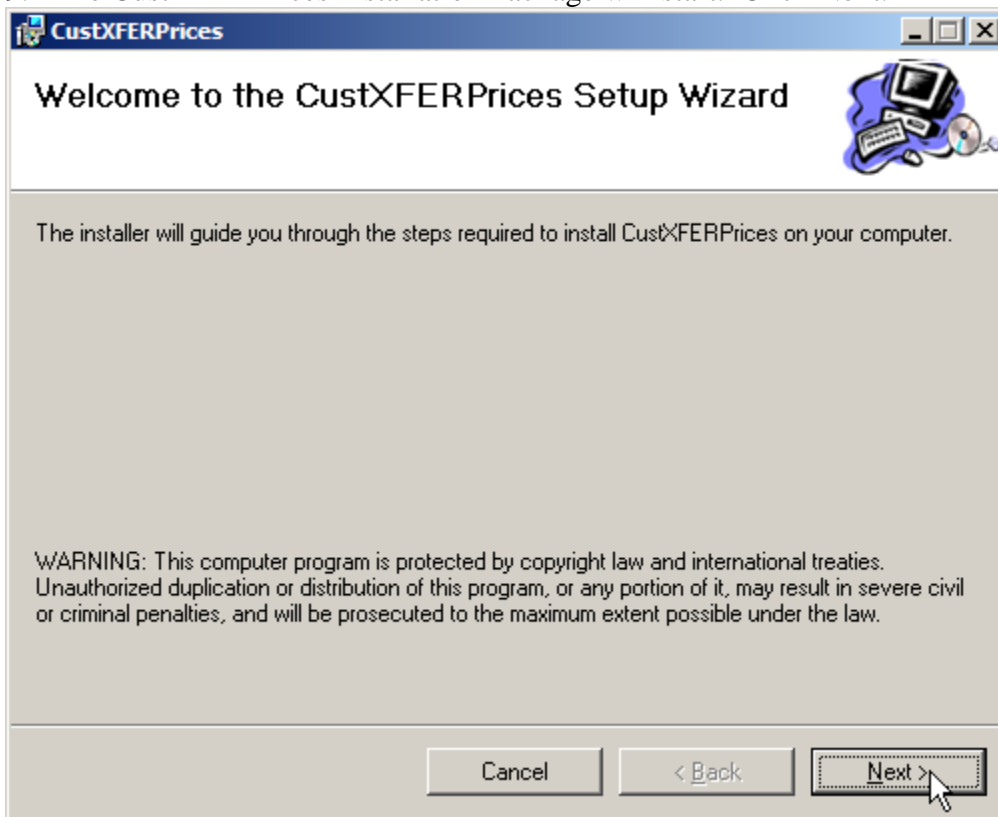
7. When asked if you want to "Run" or "Save" choose "Run".



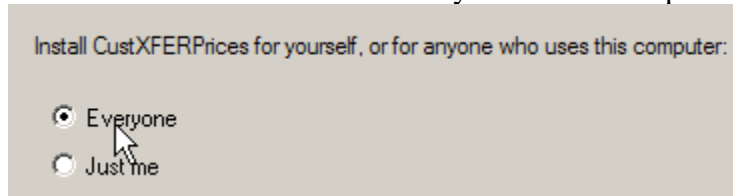
8. Depending on what version of Windows you are using, you may be asked to click “Run” again.



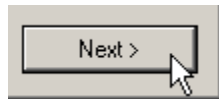
9. The CustXFERPrices Installation Package will start. Click Next.



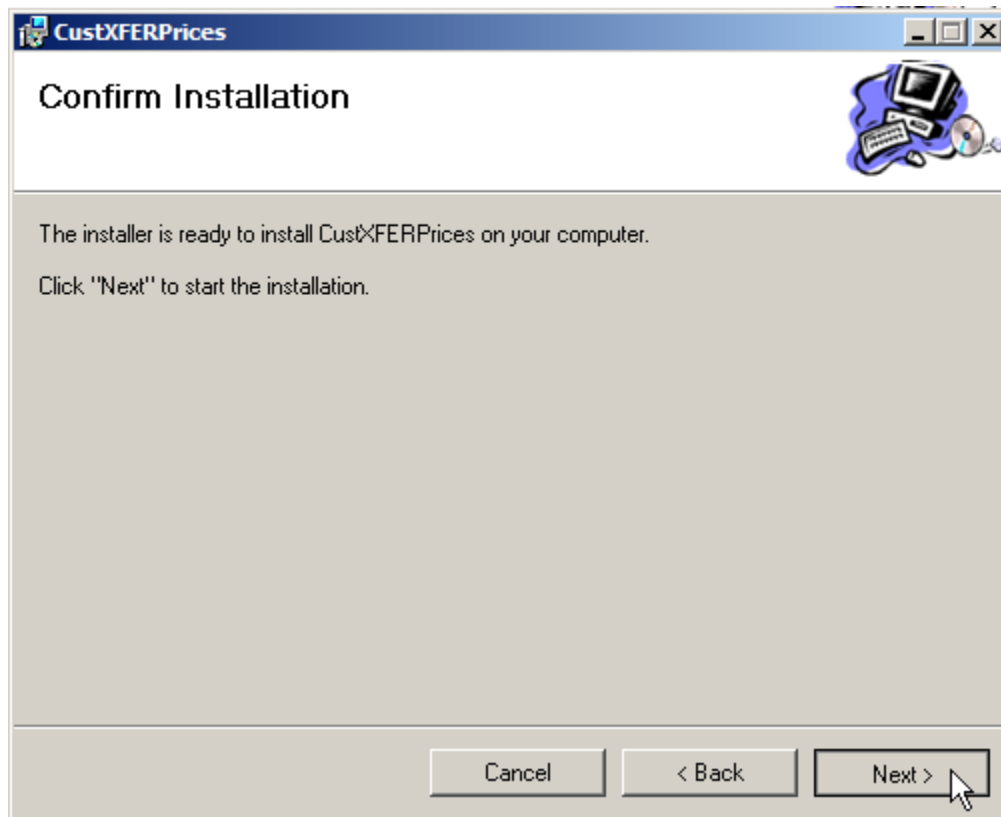
10. You should install this for everyone on the computer if given the choice.



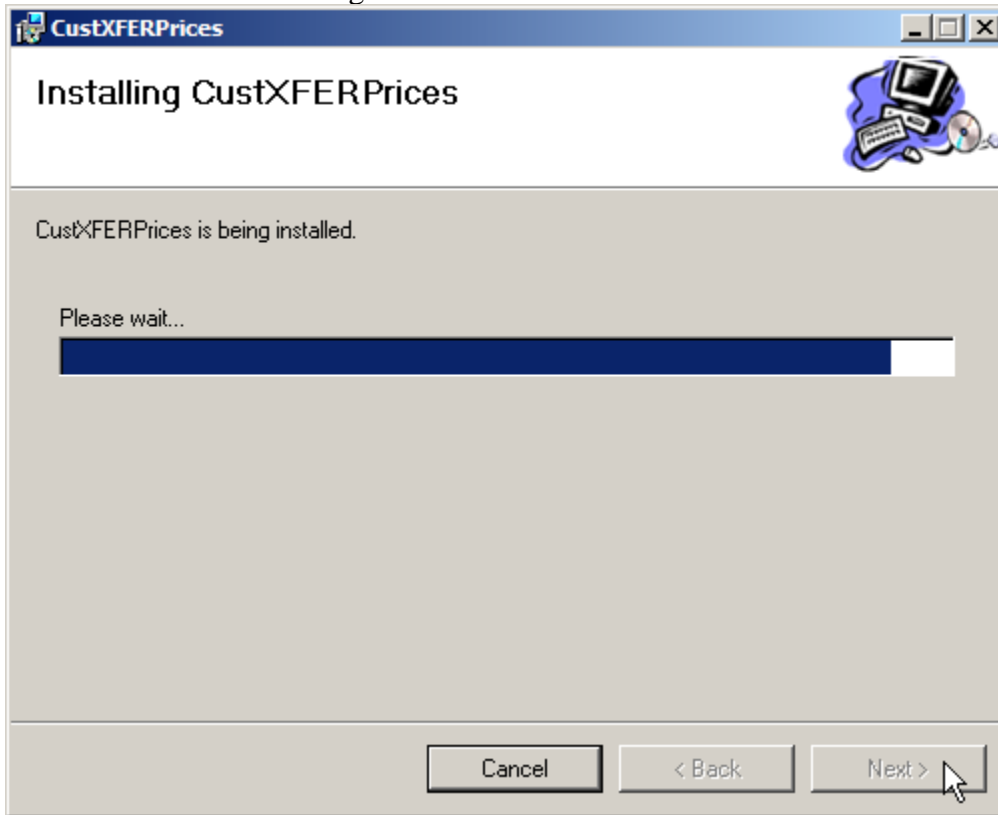
11. Click Next.



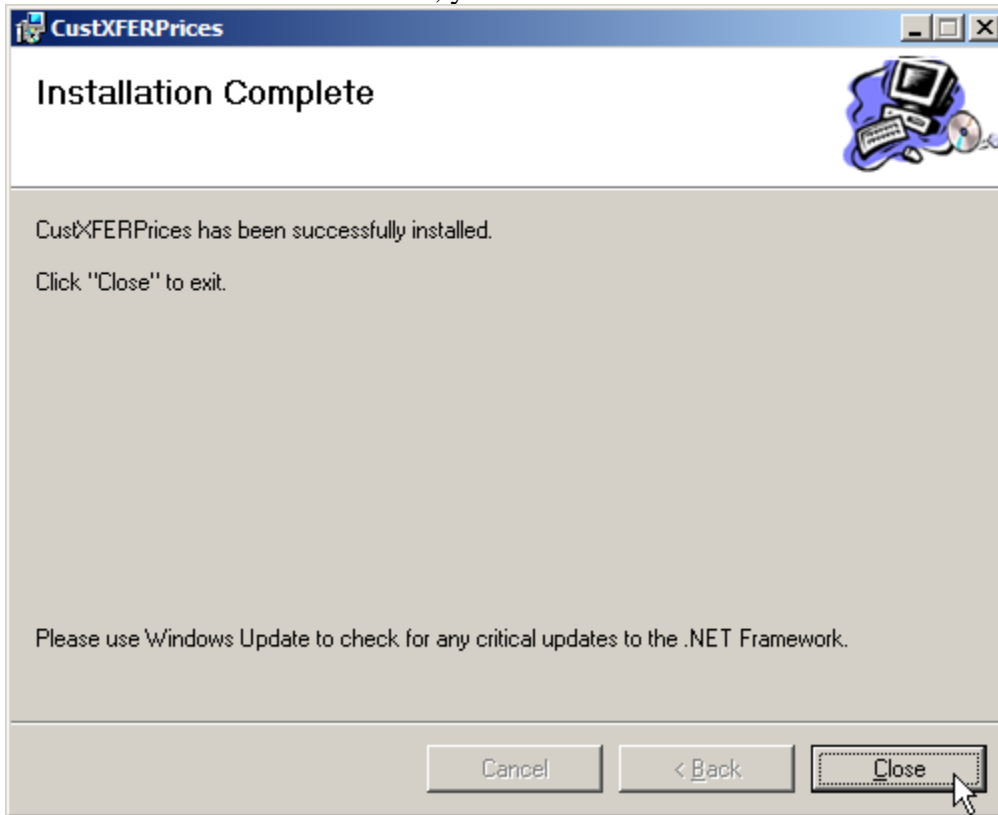
12. Click Next one more time to start the installation.



13. The installation will begin.



14. When the installation finishes, you should click Close.



Launching the Utility:

1. Click the "Start" button

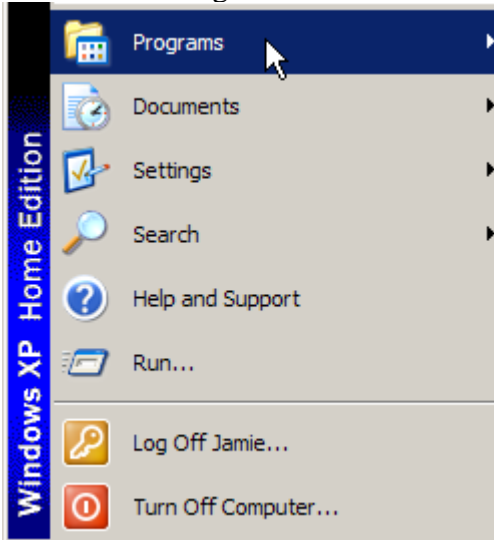


AMSWin

Business Software

...less time bookkeeping, more time selling!

2. Choose "Programs"



3. Choose "AMSWin"



4. Choose "Utilities" and then "Export or Import Prices"



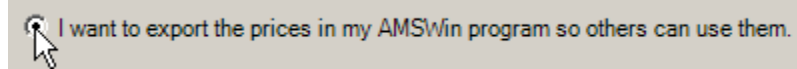
5. The Custom Transfer Prices Utility will display.

The screenshot shows a Windows-style dialog box titled "AMSWin Custom Price Transfer Utility". The dialog contains the following elements:

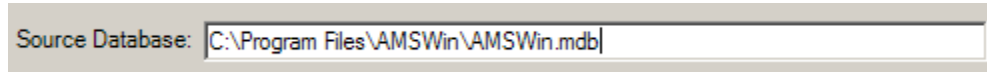
- A title bar with the text "AMSWin Custom Price Transfer Utility" and standard window control buttons (minimize, maximize, close).
- Introductory text: "This utility is designed to give you the ability to export and import prices in a non-standard way."
- Instruction: "Select the activity you want to perform:"
- Two radio button options:
 - "I want to export the prices in my AMSWin program so others can use them."
 - Source Database:
 - Export To:
 - "Include Normal Customer Price (This will be incompatible with the normal import function in AMSWin.)"
 - "I want to import my prices and add new stock numbers. (All fields will be added for new stock numbers)"
- For the import option:
 - File To Import:
 - Target Database:
- Fields To Overwrite section with a list of checkboxes:
 - Product Description
 - Weight
 - Normal Customer Price
 - Commission
 - Dealer Cost
 - Suggested Retail
 - Commercial Price
 - Retail On The Shelf Price
 - Draw From Stock Number And Quantity
 - Product Type (P-Product, S-Superior Literature, W-Warehouse Literature)
- At the bottom, there are two empty text input fields, a "GO" button, and a "Cancel" button.

To Export Your Prices:

1. To export your prices, you must first click the radio button beside “I want to export the prices in my AMSWin program so others can use them.”.



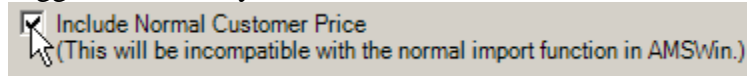
2. You must specify the location of your AMSWin database in the “Source Database” box.



3. You must specify the name and location of the file you wish to create in the “Export To” box. (If the file already exists, it will be overwritten without prompting you, so make sure you make a copy of the file if you wish to preserve it.)



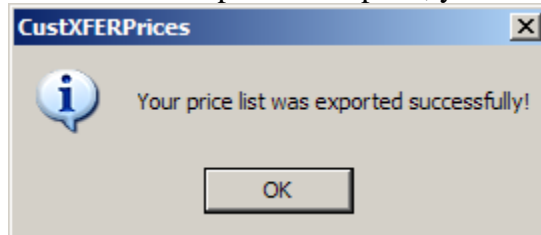
4. You must specify whether or not you want to export your Normal Customer Price along with the other product information by checking the box named “Include Normal Customer Price”. The Normal Customer Price is a manual price that will override all others on customer orders. If you don’t use Normal Customer Price, my suggestion is that you do not check this box.



5. When you are ready to create your file, click the “GO” button.

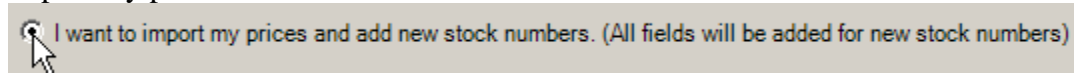


6. When the export is complete, you will be informed by a pop-up box.

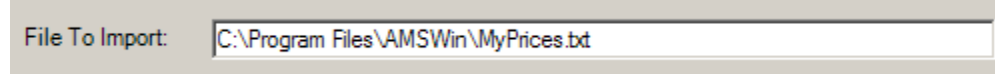


To Import Prices:

1. To import your prices, you must first click the radio button beside “I want to import my prices and add new stock numbers.”

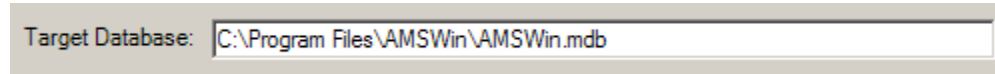


2. You must specify the file you wish to import in the “File to Import” box.



File To Import: C:\Program Files\AMSWin\MyPrices.txt

3. You must specify the database you wish to import into in the “Target Database” box.



Target Database: C:\Program Files\AMSWin\AMSWin.mdb

4. You do not have to overwrite all fields when you import your price list. You must specify the fields you wish to overwrite by checking the appropriate boxed. By default, all boxes are checked except for Normal Customer Price. You should leave this box unchecked unless you know for sure that you want to override those prices. If you don't want to overwrite your existing descriptions, but you do want to update the prices, simply remove the check from the “Description” box.



Fields To Overwrite:

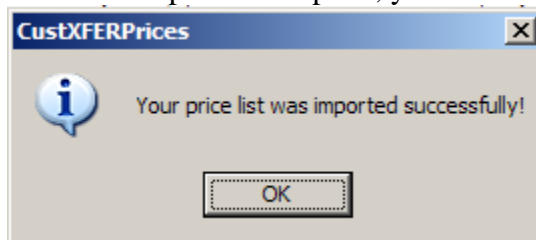
- Product Description
- Weight
- Normal Customer Price
- Commission
- Dealer Cost
- Suggested Retail
- Commercial Price
- Retail On The Shelf Price
- Draw From Stock Number And Quantity
- Product Type (P-Product, S-Superior Literature, W-Warehouse Literature)

5. When you are ready to import prices, click the “GO” button.



GO Cancel

6. When the export is complete, you will be informed by a pop-up box.



CustXFERPrices

Your price list was imported successfully!

OK